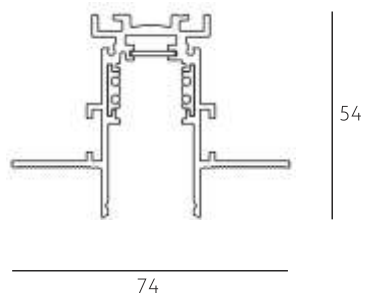
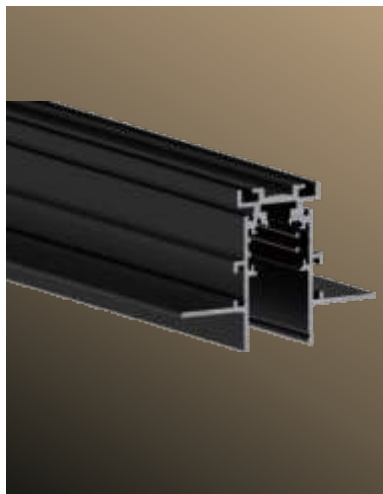




FORTY EIGHT T+ TRACK

FORTY EIGHT T+ TRACK

48V Schienensystem



48V Stromschiene für rahmenlose Einbaumontage, wahlweise weiß RAL9016 oder schwarz RAL9005. Ein Schaltkreis mit DALI-Leitung.





15A / 0-60Vdc

L01-95001BST5	48V Schiene T+	schwarz	1000mm
L01-95001W2ST5	48V Schiene T+	weiß	1000mm
L01-95002BST5	48V Schiene T+	schwarz	2000mm
L01-95002W2ST5	48V Schiene T+	weiß	2000mm
L01-95003BST5	48V Schiene T+	schwarz	3000mm
L01-95003W2ST5	48V Schiene T+	weiß	3000mm

L01-9500LB2000 Einputzabdeckung 2000mm




L01-9501SBE	Endeinspeiser	schwarz	
L01-9501SWE	Endeinspeiser	weiß	
L01-9503SBE	Linearverbinder	schwarz	
L01-9503SWE	Linearverbinder	weiß	
L01-9511BE	Eckverbinder 90°	schwarz	
L01-9511WE	Eckverbinder 90°	weiß	
L01-9518BE	Flexverbinder	schwarz	
L01-9518WE	Flexverbinder	weiß	

L01-9504ST2B	Enddeckel geschlossen	schwarz	
L01-9504ST2W2	Enddeckel geschlossen	weiß	
L01-9504ST2BF	Enddeckel mit Loch	schwarz	
L01-9504ST2W2F	Enddeckel mit Loch	weiß	

L01-9500314B Linearverbinder mechan.



L01-9500LEB3000	Blindabdeckung 3000mm	schwarz	
L01-9500LEW23000	Blindabdeckung 3000mm	weiß	